

4 Pin IP67 Connectors (Premoulded)

Specification sheet

KKDÖ

IP67

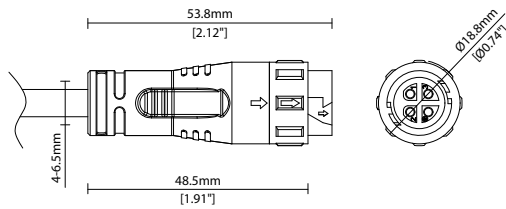


PRODUCT SPECIFICATION

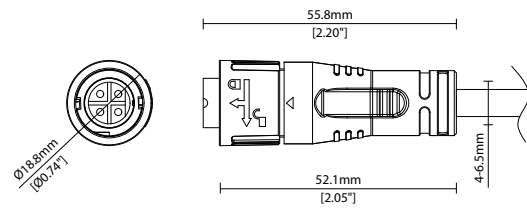
Dimensions	Ø22/L92mm (Ø0.87/L3.62in) (male + female connected)
Operating Temp	T _a = -40 to 105°C (-40 to 221°F)
IP Rating	IP67
Finish	Matt Black
Shell Materials	Nylon PA66
Contact Materials	Brass with gold-plated
Contact Ø	Ø1.5mm (0.6in) x 4 (4 pin)
Rated Current	5A (4 pin)
Rated Voltage	300V AC
Test Voltage	2,000V (AC. V/min)
Contact Resistance	≤10mΩ
Insulation Resistance	≥500mΩ at DC 500V
Outer Cable Ø Range	Ø4 - 6.5mm (0.16 - 0.26in) Ø5 - 8mm (0.2 - 0.31in)
Applicable products	MIMI, MIMI Poki, MIMI SL, MOMO, MOMO-F, MOMO-L, MOMO-R



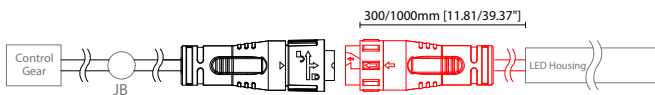
Female



Male



0300 S67A 300/1000mm (11.81/39.37") Single Ø4.3mm sheath IP67 connector



0300 D67A 300/1000mm (11.81/39.37") Double Ø4.3mm sheath IP67 connector

